

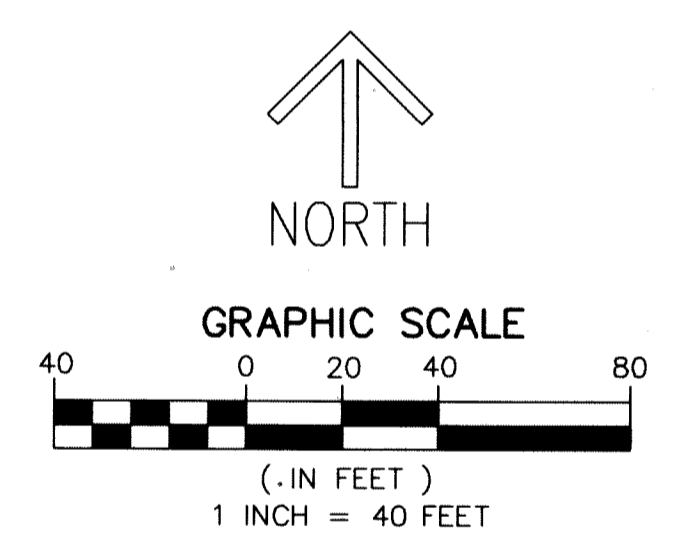
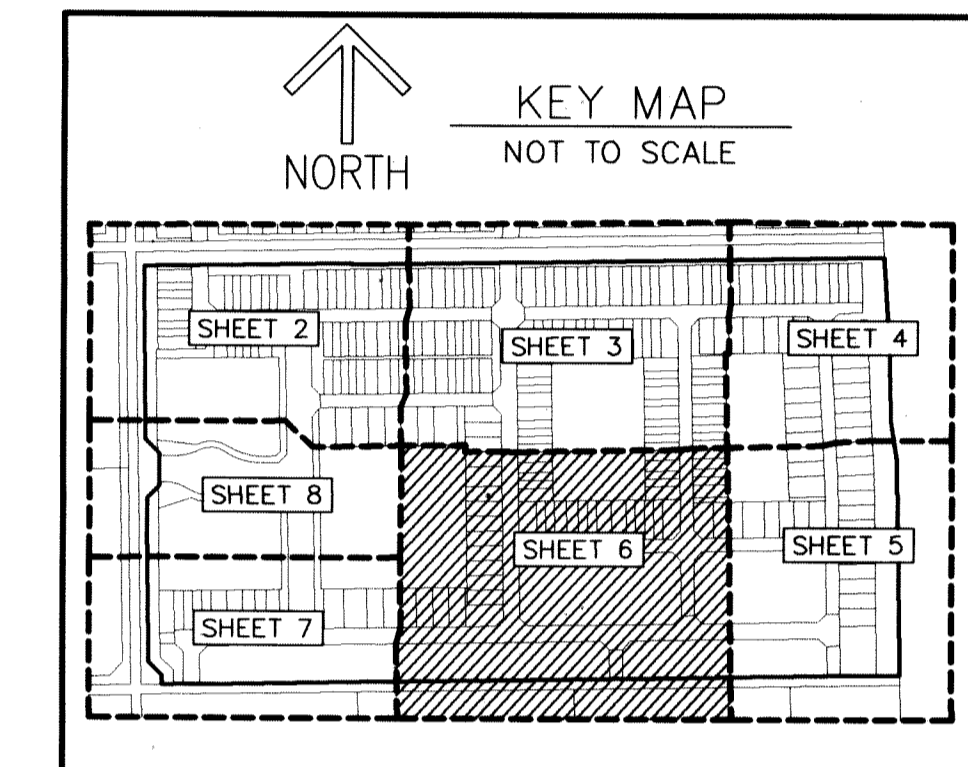
THIS INSTRUMENT PREPARED BY  
 DAVID P. LINDLEY  
 OF  
**CAULFIELD and WHEELER, INC.**  
 SURVEYORS - ENGINEERS - PLANNERS  
 7900 GLADES ROAD, SUITE 100  
 BOCA RATON, FLORIDA 33434 - (561)392-1991  
 CERTIFICATE OF AUTHORIZATION NO. LB3591

# FIELDS AT GULFSTREAM POLO PUD - PLAT TWO

A PLANNED UNIT DEVELOPMENT  
 BEING A REPLAT OF PARCEL C, TRACT L-13 AND TRACT L-14, FIELDS AT GULFSTREAM POLO PUD - PLAT ONE,  
 AS RECORDED IN PLAT BOOK 123, PAGES 80 THROUGH 95, OF THE PUBLIC RECORDS OF PALM BEACH COUNTY, FLORIDA,  
 LYING IN SECTION 29, TOWNSHIP 44 SOUTH, RANGE 42 EAST, PALM BEACH COUNTY, FLORIDA

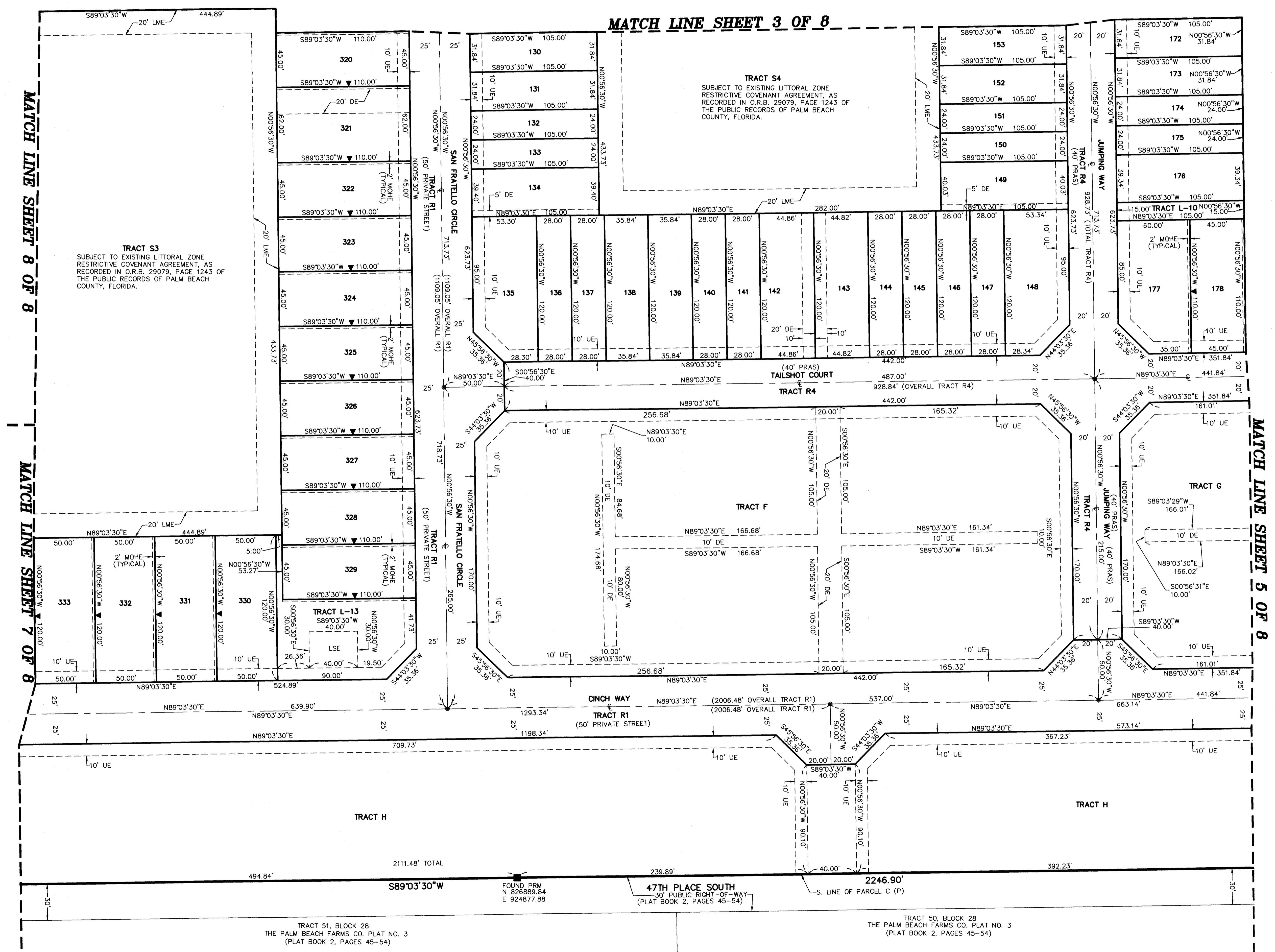
135

SHEET 6 OF 8



**NOTES**  
 COORDINATES, BEARINGS AND DISTANCES  
 COORDINATES SHOWN ARE GRID  
 DATUM = NAD 83 (90/98 ADJUSTMENT)  
 ZONE = FLORIDA EAST  
 LINEAR UNIT = US SURVEY FEET  
 COORDINATE SYSTEM 1983 STATE PLANE  
 TRANSVERSE MERCATOR PROJECTION  
 ALL DISTANCES ARE GROUND, UNLESS OTHERWISE NOTED  
 SCALE FACTOR = 1.0000236  
 GROUND DISTANCE X SCALE FACTOR = GRID DISTANCE  
 BEARINGS AS SHOWN HEREON ARE GRID DATUM,  
 NAD 83 (90/98 ADJUSTMENT), FLORIDA EAST ZONE.

**LEGEND/ABBREVIATIONS**  
 C - CENTERLINE  
 Δ - DELTA (CENTRAL ANGLE)  
 CB - CHORD BEARING  
 CD - CHORD DISTANCE  
 DE - DRAINAGE EASEMENT  
 E - EASTING (WHEN USED WITH COORDINATES)  
 L - ARC LENGTH  
 LAE - LIMITED ACCESS EASEMENT  
 LB - LICENSED BUSINESS  
 LMAE - LAKE MAINTENANCE ACCESS EASEMENT  
 LME - LAKE MAINTENANCE EASEMENT  
 LSE - LIFT STATION EASEMENT  
 L.W.D. - LAKE WORTH DRAINAGE DISTRICT  
 N - NORTHING (WHEN USED WITH COORDINATES)  
 MOHE - MAINTENANCE AND OVERHANG EASEMENT  
 O.R.B. - OFFICIAL RECORD BOOK  
 PC - POINT OF CURVATURE  
 PRAS - PRIVATE RESIDENTIAL ACCESS STREET  
 PRC - POINT OF REVERSE CURVATURE  
 PT - POINT OF TANGENCY  
 PBCUE - PALM BEACH COUNTY UTILITY EASEMENT  
 (P) - FIELDS AT GULFSTREAM POLO PUD - PLAT ONE  
 (PLAT BOOK 123, PAGES 80-95)  
 (P2) - PALM BEACH FARMS CO. PLAT NO. 3  
 (PLAT BOOK 2, PAGES 45-54)  
 R - RADIUS  
 (R) - RADIAL  
 RCE - ROADWAY CONSTRUCTION EASEMENT  
 UE - UTILITY EASEMENT  
 SWE - SIDEWALK EASEMENT  
 ■ - INDICATES "ZERO" SIDE OF LOT LINE  
 ■ - DENOTES PERMANENT REFERENCE MONUMENT  
 4" x 4" x 24" CONCRETE MONUMENT WITH  
 ALUMINUM DISK STAMPED "C&W PRM LB3591"  
 ● - DENOTES PERMANENT CONTROL POINT



MATCH LINE SHEET 3 OF 8

MATCH LINE SHEET 8 OF 8

MATCH LINE SHEET 7 OF 8

MATCH LINE SHEET 5 OF 8

TRACT S4  
 SUBJECT TO EXISTING LITTORAL ZONE  
 RESTRICTIVE COVENANT AGREEMENT, AS  
 RECORDED IN O.R.B. 29079, PAGE 1243 OF  
 THE PUBLIC RECORDS OF PALM BEACH  
 COUNTY, FLORIDA.

TRACT S3  
 SUBJECT TO EXISTING LITTORAL ZONE  
 RESTRICTIVE COVENANT AGREEMENT, AS  
 RECORDED IN O.R.B. 29079, PAGE 1243 OF  
 THE PUBLIC RECORDS OF PALM BEACH  
 COUNTY, FLORIDA.

TAILSHOT COURT  
 TRACT R4

CINCH WAY  
 TRACT R1  
 (50' PRIVATE STREET)

47TH PLACE SOUTH  
 30' PUBLIC RIGHT-OF-WAY  
 (PLAT BOOK 2, PAGES 45-54)

TRACT 51, BLOCK 28  
 THE PALM BEACH FARMS CO. PLAT NO. 3  
 (PLAT BOOK 2, PAGES 45-54)

TRACT 50, BLOCK 28  
 THE PALM BEACH FARMS CO. PLAT NO. 3  
 (PLAT BOOK 2, PAGES 45-54)

FOUND PRM  
 N 826889.84  
 E 924877.88